

Key stage 1

Mathematics

Paper 2: reasoning

| | |
|-------------|--|
| First name | |
| Middle name | |
| Last name | |

Total marks

| |
|--|
| |
|--|



Charlie



Eeshu



Arthur



Kate



Marcus

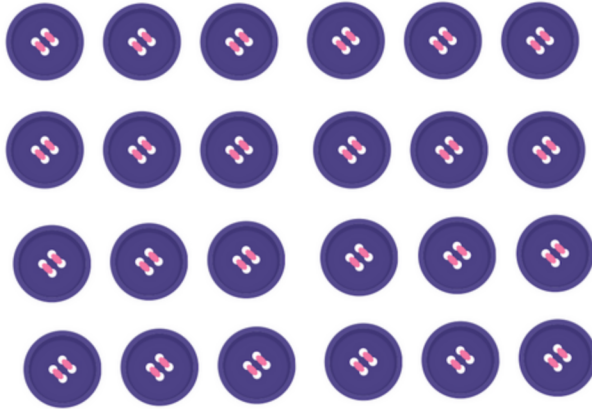


Sita

Practice question

$90 + 5 =$

1



1 mark

2



1 mark

3

16 25 35 50 55 59



1 mark

4



1 mark

5

98

96

94



1 mark

6

Match these numbers to their names.

16

Forty seven

47

Twenty three

98

Sixteen

23

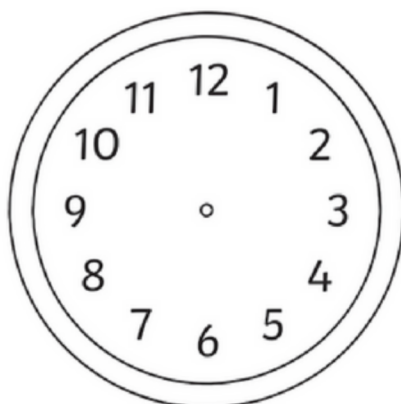
Ninety eight



1 mark

7

Draw hands on this clock to show the time **quarter past 8**



1 mark

8

Write two numbers to make this calculation correct.

$$\square + \square = 100$$

Now, write four same numbers to make this calculation correct.

$$\square + \square + \square + \square = 100$$



1 mark

9

Use $<$, $>$, $=$ symbols . Put the correct sign in the box below.



150ml



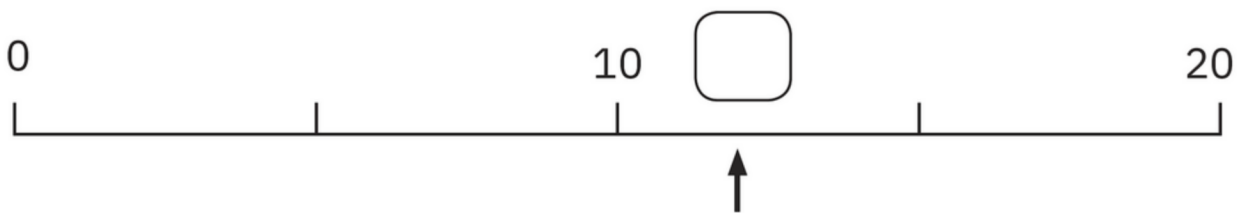
105ml



1 mark

10

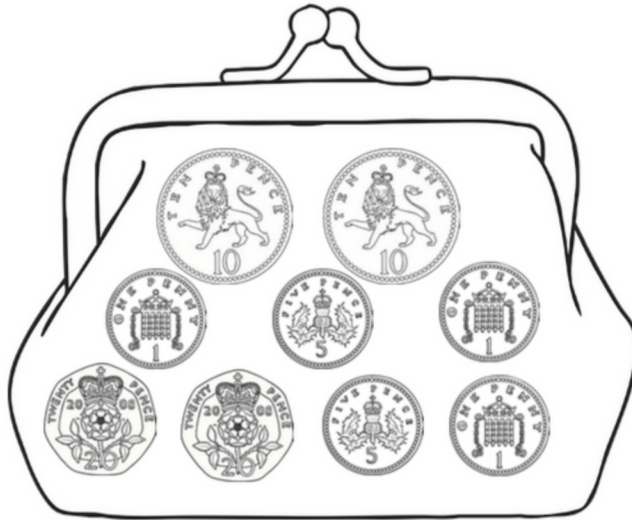
What number is shown by the arrow on this number line?



1 mark

11

How much money is in the purse?





1 mark

12

Here are some digit cards.

3**5****6****10**

2 digit cards can be placed in this calculation to complete it.

Write the numbers in the boxes.

$$\square \times \square = 30$$



1 mark

13

Write 4 even numbers:

Write 4 odd numbers:



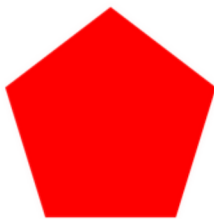
1 mark

14

Name these shapes.









1 mark

15

What shape am I?



I am a 3D shape.
I have 8 edges.
I have 5 vertices.
I have 1 square-shaped face
and 4 triangle-shaped faces.

Write the name of the shape in the box below.



1 mark

- 16 In Yew tree Class, 5 children bring a packed lunch and 23 children have school dinners.



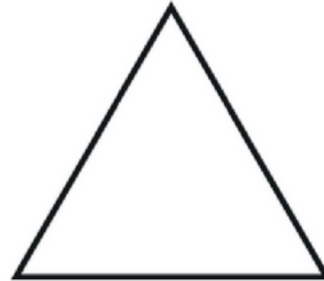
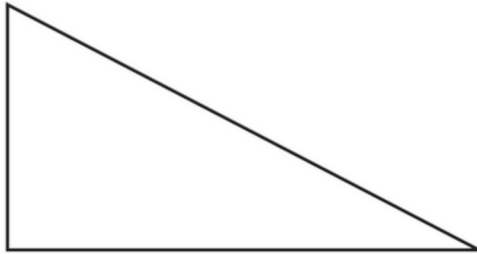
a) How many children are in the class in total?

1 mark

b) What is the difference between the number of children with a packed lunch and the number of children having school dinners?

1 mark

- 17** One of these triangles is symmetrical. Draw a line of symmetry on one of these triangles.



1 mark

- 18** A class raise £60 for a charity and the teacher donates enough money to make the total £100.

Which of the following calculations could help you work out how much the teacher has donated?

$$6 + 4 = 10$$

$$6 + 10 = 16$$

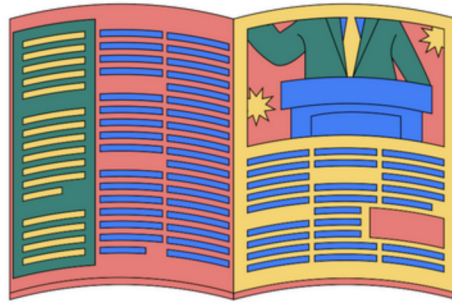
How much has the teacher donated?



1 mark

19

Eeshu has 25p. Her father gives her 50p. She buys a magazine for 40p. How much money has Eeshu got left?



1 mark

20

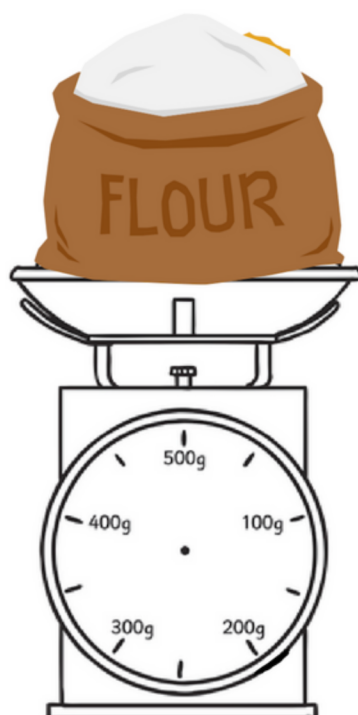
Arrange the numbers from smallest to largest.

65 43 7 99 24 15

1 mark

- 21** Marcus needs 350g of flour. Draw the arrow on the scales to show the flour weighing 350g.



1 mark

22

Sita buys an ice cream for 65p. She pays with a £1 coin.
How much change does she receive?



1 mark

23

Write the number 95 in words.



1 mark

24

Complete this calculation.

$$100 - 1 = \square$$

$$50 = \square \times 10$$



1 mark

25 The teacher asks Arthur to share 25 books equally on 5 tables.



How many books will Arthur put on each table?

Write the calculation you would use to find the answer.



1 mark

26

The children in a class collect some coins. They have five 1p coins and five 10p coins.
How much money have the children collected?



1 mark

27

A baker has made 30 cookies. He divides them equally between 5 bags.



How many cookies are in each bag?



1 mark

- 28 There are **20** Donuts. **2** are eaten. How many Donuts are left?



Donuts



1 mark

- 29 Kate has calculated that **$43 - 13 = 30$** .
Write an inverse calculation to check the answer.

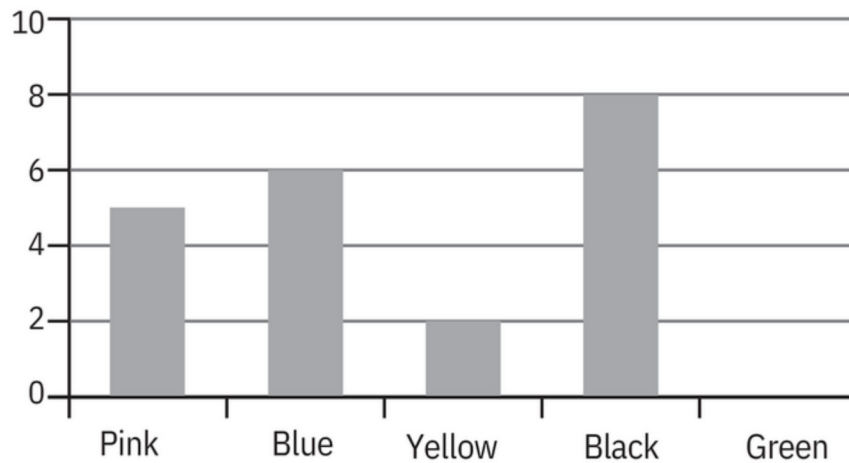


1 mark

30

A class choose their favourite colours.

Here is a block diagram showing the choices of the children.



1 mark

- a) How many more children voted for the most popular colour than the least popular?



1 mark

- b) Green colour received 3 more votes than yellow. Draw the bar to the correct height.

- 31 Eeshu has **£20**. She spends $\frac{1}{4}$ of her money on a new toy teddy.



1 mark

How much does the teddy cost?

How much does Eeshu have left?

1 mark

32 How many minutes are in half an hour?

1 mark

| | |
|------------|--|
| Question 1 | There are 24 buttons on the page. Put a ring around half of them. |
| Question 2 | Two, Four, Six, Eight... Write the next two numbers in the sequence |
| Question 3 | Circle any number where the digit 5 represents 50. |
| Question 4 | Write the number that is one more than 17. |
| Question 5 | Continue the sequence.. Write the missing numbers in the box. |

End of test

[BLANK PAGE]

Please do not write on this page.